

www.ctemag.com

CUTTING TOOL ENGINEERING®

JUNE 2002

VOLUME 54 / NUMBER 6

SUPER TOOLS

Special Focus: PCBN tools and superabrasive wheels

PLUS

Taking the Edges Off Tough-to-Deburr Parts

How to Make Quick-Change Tooling Quicker

Importance of Drill Margins to Holemaking

Out of Touch

Tools and technologies for removing hard-to-reach burrs.

Removing hard-to-reach burrs, such as those that form at internal cross-hole intersections, can be a real pain.

Vibratory tumblers often are not an option because of the media these systems use. The media are either too large to reach the area in need of deburring or, if small enough to gain access, some of them become lodged in the part.

Attempting to remove these types of burrs manually can create problems, too. Rotary files often produce inconsistent results.

Presented here are some of the technologies and cutting tools that effectively and consistently deburr hard-to-reach burrs: electrochemical machining, thermal deburring, chemical deburring, abrasive-flow machining, waterjet deburring and spindle-driven carbide deburring tools.

The Cationic Method

Electrolytic cationic deburring is an effective method for removing hard-to-reach burrs. Also known as electrochemical machining (ECM), this sophisticated process involves pumping an electrolyte solution, such as sodium chloride or sodium nitride, through the space between the electrode tool (cathode) and the workpiece (anode).

Workpieces receive a positive charge from anode contacts mounted on the fixture. Material is selectively removed from the positively charged workpiece when the

electrolyte is flushed between it and a negatively charged electrode. There is no direct contact between the tool and workpiece, so there is no part or tool wear, distortion or mechanical stress.

ECM also doesn't produce a recast layer, said Joe Zmick, division manager for Cation, a Troy, Mich., ECM job shop.

Zmick said any workpiece that's conductive is suitable for the process. But he added that ECM is most appropriate for parts with internal intersections or slots, because other methods can damage the workpiece when deburring these types of features.

"Electrolytic deburring is not run-of-the-mill deburring," he said. "If you don't need a sophisticated deburring process, it's not recommended."

The requirements for the electrode tooling are one reason the process deserves careful consideration before trying it. According to Eden Diver, vice president of SurfTran Mfg. Co. LLC, Madison Heights, Mich., the tooling can either be "simply or thoughtfully designed," but the former won't last long. SurfTran builds ECM systems

ranging from single-station machines to automatic transfer lines.

Zmick noted that the main skill requirements for the end user involve developing the tooling, which Cation does in-house. The end user also has to determine the operating voltage, cycle time, gap size and electrolyte conditions, including type, temperature, pressure and velocity. "The process is very consistent once all that's engineered in."

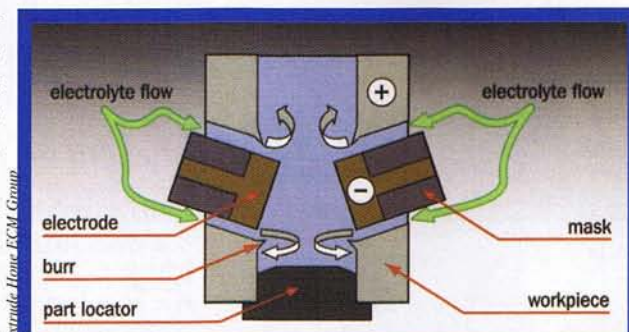
Burr Meltdown

Excessive heat is undesirable at the cutting tool/workpiece interface. But a controlled burst of intense heat is an effective way to deburr hard-to-reach features.

The process is known as the thermal energy method. TEM systems, also available from SurfTran, oxidize burrs and flash without significantly changing parts metallurgically or dimensionally, said Diver.

He explained that the parts to be deburred are sealed in a chamber, which is pressurized with combustible gases

such as natural gas or hydrogen and oxygen. When ignited by a 30,000v spark, the gas mixture produces a transient burst of heat (from 4,530° F to 6,330° F) that envelops and vaporizes the burr. Within a couple microseconds, the fuel burns off and the burrs continue to oxidize into a powder until there's nothing on the part's edge that can be removed. The method



Typical fixture for electrolytic cationic deburring of cross-holes.

permits batch processing of similar or dissimilar parts.

While very thin or fragile parts are not suitable for TEM deburring, Diver said an otherwise robust part's thin and delicate features could be masked with a fixture detail or covered with a heat-absorbing block to protect them during ignition.

When thermally deburring internal cross-hole intersections, Jeff Hemphill, manufacturing engineer for Robert Bosch Corp., Charleston, S.C., said the depth-to-diameter ratio generally should be less than 5:1 and, for small-diameter holes, as low as 2:1. The reason is that the fuel needs adequate space to generate enough heat to vaporize the burr.

He said that Bosch, which makes

fuel injectors and other automotive parts, employs electrolytic chemical machining to deburr internal cross-holes 95 percent of the time and TEM when the holes are big enough and not too deep. Hemphill added that TEM is primarily for removing external burrs.

However, Bob Douglas, general manager of ThermoBurr Illinois, a deburring job shop located in Huntley, disagreed that there's a diameter-to-depth limitation when thermal deburring cross-holes. He said that since the gas mixture permeates any and all part features, even the smallest cross-hole burr can be removed. According to Douglas, the burr's shape and physical characteristics dictate whether it can be removed with TEM. A burr with too large of a base, for example, would ball up rather than completely oxidize.

"If you can push or pick a burr off, it can be burned away," Douglas said.

He added that a dull tool is more likely to generate burrs that can't be thermally removed, because it tends to "push" the metal rather than cut it. Machining parameters also impact burr dimensions. For that reason, Douglas said he'd recommend speed and feed changes, when appropriate, to help a customer produce burrs that can be burned away.

But when the part and burr dimensions are appropriate, Hemphill said TEM offers several advantages over electrochemical machining. TEMed parts do not need preparation before deburring, whereas it's critical to perform secondary work on workpiece variations in order to have consistent parts for ECM. Therefore, Bosch deburrs critical areas using tools and jigs produced in-house before the parts are ECMed.

In addition, the TEM fixturing is less complex. All that's required is a holder with a lid on top or a basket to contain the parts so they don't bang around during the process and get nicked or scratched.

Another advantage of TEM is its cost. A thermal-deburring machine and tooling costs about \$300,000, Hemphill said, while the machine, tanks and power supply for ECM deburring costs about \$200,000 and tool-



Simple to use, programmable Darex XPS-16 CNC Drill Sharpener resharpenes an infinite variety of conical, four-flute, split-point HSS and carbide drills.

Get 89% of Your Drill Usage Free*

Constantly buying new drills or hiring an outside sharpening service is costly. A Darex XPS-16 CNC Drill Sharpener will easily renew a drill 100's of times.* In about a minute, resharpen a two-flute drill (even an expensive, high-performance patented-point drill) to brand new performance specs.

*The XPS-16 removes .005" to .020" worth of material with every resharpening. For a drill with a 2 inch flute length, that's 100 to 400 resharpenings. It's like buying one drill and getting 99 drills or more free. Contact us, and we'll calculate your exact savings.

\$415⁷³ Lease to own price.
per month for 60 months. This and other lease program details available at Darex.com.
Or own for a single payment of

\$17,997

Call, write or email us for your free literature, CD or video.

DAREX

A Darex sharpener completes your shop

800-547-0222 | PO Box 277 Ashland, OR 97520 | www.Darex.com

Information Services #54



A machine for deburring via the thermal energy method vaporizes burrs with a short burst of intense heat.

ing adds \$500,000 or more to the price tag, depending on its complexity.

Even though it costs less than ECM, Douglas said his customers very rarely buy TEM equipment for in-house use.

And although Hemphill said Bosch could outsource parts for thermal deburring, the same couldn't be said for ones that require electrochemical processing.

"Those parts have critical features, so we don't want the rest of the world seeing what we're doing," Hemphill said.

Electroless Steel Removal

If difficult-to-reach burrs need to be removed from a steel part, Robbinsville, N.J.-based Surface Technology Inc. has an electroless chemical deburring process for the job, said Michael Feldstein, company president. Called Deburr 1000, the process is performed at room temperature (around 70° F) by bathing steel parts in a mildly acidic liquid, which is similar in color and viscosity to ice tea. He said that since it's electroless, there's less monitoring required and less expense involved.

Feldstein explained that the chemical solution etches, or dissolves, the part's surface in a controlled manner, severing the burr at its base. The burr then falls to the bottom of the polypropylene tank and continues to dissolve after the part is removed and rinsed.

The process works uniformly across complex geometric surfaces, making it ideal for deburring, say, two-stroke engine components with internal cross-holes. He added that the part experiences a negligible amount of deterioration, and that the surface has a peak-to-valley height of 0.1µm.

In addition to the chemicals and a tank, a 300-series stainless steel or PTFE (polytetrafluoroethylene) cooling coil is needed. The coil connects to a chiller capable of removing the heat generated by the exothermic deburring reaction and maintaining a constant operating temperature ($\pm 1^\circ\text{C}$). Feldstein said a slightly warmer solution accelerates metal removal, while a colder

RoundTool[®] LABORATORIES

www.roundtool.com

5451 McFadden Avenue
Huntington Beach, California USA 92649
Phone 714.898.9224 / 800.854.2431 / Fax 714.891.7816
A Tool Alliance Company / ISO 9002 / Made in the USA

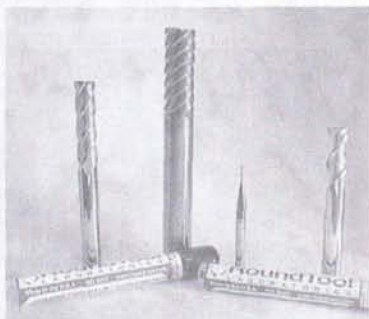
GR Series
75,000 RPM

DM Series
High Accuracy

HT Series
62Rc Machining

AL Series
600 IPM

- Specialized geometry for HSM
- Proprietary Carbide Substrates
- Advanced Tool Coatings
- SmoothGrind[®] Technology
- Application-Specific Design



RoundTool[®] LABORATORIES

High Performance Solid Carbide Rotary Tools • Made in the USA

A solid carbide brand proudly manufactured in the U.S.A. and designed from inception to compete with and outperform the very best from Europe and Japan; RoundTool Laboratories[®].

The RoundTool product line features the finest technologies available worldwide combined to set new standards for machining efficiency in Graphite (Diamond-coated GR Series), hardened materials (HT Series), Aluminum (AL Series), and high accuracy profiling applications (DM Series).

Our products are fully guaranteed to surpass your expectations. Because at RoundTool Laboratories we hold a promise to our customers and ourselves:

**Not just where machining is today,
But where machining will be.™**



TOOL ALLIANCE

Check out these other great Tool Alliance brands at www.toolalliance.com

TUNGSTEN TOOLWORKS

Customized solid carbide round tools



www.tungstentoolworks.com

ULTRATOOL[®]

Solid carbide standards & blueprint specials



www.ultra-tool.com

Come see us at:

IMTS - E-2780
ISMA / I.D.A. Fall Conv.
EMO - Milan, Italy

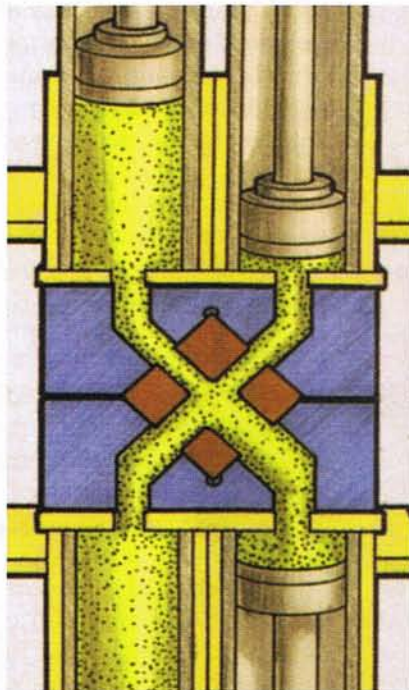
bath is beneficial for delicate parts.

Typical cycle times are from 1 to 10 minutes, depending on the grade of steel, bath temperature, solution concentration and the amount of material to be removed. After deburring is performed, Feldstein said the solution is somewhat depleted and, based on an analysis, the appropriate amount of replenisher chemical needs to be added to the tank.

"It's a bleed-and-feed process of taking some out and putting some in," he said. "But the solution lasts forever."

In addition to making and marketing the chemicals, Surface Technology also provides a deburring service.

The electroless-chemical process is currently only for parts made of steel alloys—not stainless steel—but Feldstein said Surface Technology is looking at developing other chemicals for other metals. "We have a concept for aluminum and want to modify the current chemistry for stainless," he said.



Extrude Home

Abrasive flow machining, such as the Multiflow process, is able to effectively and selectively deburr internal part features.


Water Power

In nature, flowing water sculpts the shapes of rocks and riverbanks over time. In manufacturing facilities, high-pressure water can be applied to quickly deburr hard-to-reach features while simultaneously cleaning the parts.


David Becker, product manager for Sugino Corp., said the Schaumburg, Ill.-based company's 4-axis CNC Jet-Flex Center combines high-pressure waterjet deburring with drilling, tapping and milling. (Sugino's newest design just deburrs.)

The machine can be ordered with either a 5,000- or 10,000-psi pumping station and a 250-gal. water reservoir. The water pressure is controlled via a manual pressure regulator. In some cases, less pressure can definitely be more effective, because too much pressure can expose air pockets in a casting made from aluminum, for example.

Becker said high-pressure water is able to remove loose flat burrs and




CUTTING EDGE SOLUTIONS



WWW.HANSONWHITNEY.COM
1-860-687-6933
1-877-877-1888 (Toll Free Voice)
1-888-566-0949 (Toll Free Fax)
1-800-548-2851 (Toll Free Fax)

Information Services #29

NEED SPECIALS? IT'S IN OUR NAME!




Special Carbide Tools Save Money

Features:

- Over 60 years of experience
- Multiple operation carbide cutting tools
- Precision ground crush rolls
- Engineering and design assistance
- Form Tool and Crush Roll regrinding

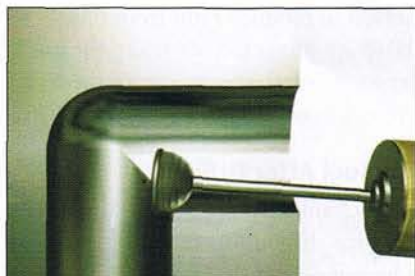
Also Available:

- Carbide Thread Hobs
- Port Tools
- Tool repair and resharpener



TOOL SPECIALTY CO.
1011 E. Slauson Avenue • Los Angeles, CA 90011
(323) 232-3561 • FAX (323) 232-3429
Web Site: www.toolspecialty.com

Information Services #25



An in-line tool allows drilled cross-holes to be deburred without moving parts to another area of the shop.

grinding burrs, but will not remove rollover burrs or burrs formed as a result of material being pushed instead of cut. Waterjets also can't radius a corner. He noted that Sugino tests a prospective client's production parts to determine if the burrs can be removed via waterjet.

The waterjet nozzle sprays in a straight, fan or lance pattern, allowing water to be shot in any direction. And the nozzles can be programmed so they aim at specific locations inside a part and follow a linear, circular or helical-interpolation movement. (The deionized water contains a 3 to 4 percent so-

lution of rust inhibitor.)

The turret-type machine is available with six or eight spindles and either a horizontal or vertical design. Typically, companies use the hard-tooling portion of the machine—as opposed to the waterjet portion—for other deburring tools, such as brushes, Becker said.

He said the cost of the system, which can be supplied as a turnkey package, ranges from about \$200,000 to \$400,000.

Abrasive Putty

Imagine grinding and having the

wheel change its shape to match the internal features of a workpiece. That's sort of what happens with abrasive-flow machining. But, instead of a wheel, a plastic, abrasive-laden polymer selectively and controllably abrades the surfaces that it flows across. This makes AFM another effective method for deburring difficult-to-reach features, as well as radiusing cross-hole intersections to remove stress risers.

The putty-like polymer substance contains an abrasive, such as boron carbide, diamond, aluminum oxide or silicon carbide, with grain sizes from

Special C-Frame Fixtures

Royal C-Frame Fixtures assure complete machining of large valve body flanges and/or weld connections by clamping on part's body... and not on the flanges.

Unique arrangement improves overall production quality and reduces overall manufacturing time through lesser handling and concentration of machining operations



Inquire about Royal's custom designed and "special-built" fixtures.

Fixture can accommodate a family of parts through the use of interchangeable top clamps and nests.

ROYAL WORKHOLDING
ROYAL MACHINE & TOOL CORP.
Innovative Solutions

P.O. Box Y, 4 Willow Brook Dr., Berlin, CT 06037-1534
(860) 828-6555 • FAX (860) 828-1591

Web: www.royalworkholding.com

Information Services #35

Superior Quality Cutting Tools

Application Engineering

Innovative Solutions

Standard Products

Specials

PRO-LINE HAM PRECISION

3xD
5xD
7xD
12xD
Solid Carbide
Stocked
Standard Drills

PRICE LIST 2007



ISO 9001 Certified

GM Supplier of the Year, Worldwide, 8 Consecutive Years

N14 W23755
Stone Ride Drive
Suite 263
Waukesha, WI 53188
Phone: 262-523-4114
FAX: 262-523-4116
ham1@execpc.com

HAM PRECISION

www.hamprecision.com

Information Services #27

out of touch

1,000 grit to 8 grit, said Thomas Kohut, vice president of sales at Extrude Hone Corp., Irwin, Pa. "The grit size varies from flour to fine pebbles." He added that the polymer can penetrate holes as small as 50µm.

Typically, an AFM system has two vertically opposed cylinders that press an abrasive back and forth through the workpiece's passages. Using hydraulics, the extrusion pressure ranges from 100 to 3,000 psi. In addition, Extrude Hone, which purchased SurfTran about 1 year ago, offers patented one-way and Multiflow abrasive-flow machinery. The Multiflow process uses multiple media cylinders that can be selectively actuated to provide controlled AFM to each edge and passage in a complex part.

According to Kohut, the diesel industry has the most applications for AFM. For example, diesel injector bodies, valves and nozzle holders are abrasive-

flowed to produce radii from 0.004" to 0.016" on the intersections of the high-pressure holes. This improves the high-cycle-fatigue strength of the parts.

The Tool After Drilling

Mechanically applied cutting tools produce difficult-to-reach features, so why not deburr these features, such as drilled cross-holes, in-line with spindle-driven tools? Such a procedure is possible with J.W. Done Co.'s Orbitool deburring tool, said Rick Kosarchuk, vice president of the Foster City, Calif.-based company.

"If the part is already on the machine, you can deburr it in that machine with the tool," he said. "And there's no cleaning required prior to deburring."

The tool consists of an uncoated carbide cutter and a slightly larger, polished-steel disk fixed on the end of a tool-steel shaft, which is mounted on a flexible elastomer coupling. The deburring tool also has a drive shaft that fits into a toolholder.

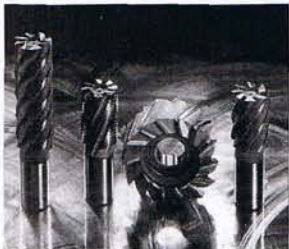
After the tool is partially inserted into a hole and is properly positioned against the smooth bore wall, it rotates and advances while sweeping the wall. The disk prevents any cutting until the tool reaches the intersection; burr removal begins when the disk enters the second bore, allowing an interface between the cutter and burr. The operation can be tailored to leave a minimally broken edge or a blended radius.

Kosarchuk said that compared to other mechanical deburring methods, J.W. Done's in-line process doesn't generate any hazardous material, require the purchase of an additional machine, consume electrolytes or need fixed tooling. The tool costs about \$300, he noted.

Steve Huette, shop manager for Morton (Ill.) Welding Co. Inc., said the biggest benefit of the tool is that it eliminates parts handling between workstations. "Material movement is costly, so there's a tremendous savings when you don't have to move parts from one area

UNIMAX

Aluminum Titanium Nitride



Advantages:

- Reduced tool costs
- Reduced manufacturing costs
- Improved surface quality
- Environmentally friendly

Unimax is a new powerful PVD coating developed by MPI for high speed, high velocity machining of today's hard to machine metals. Unimax features an ultra smooth surface and unique microstructure that allows freer cutting and better chip evacuation in dry machining applications.

Also, you can dramatically extend the tool life, increase speed and feed when optimally combined with our advanced soft coating MOVIC, used in dry cutting.



Metallurgical Processing, Inc.

Toll Free: Northeast (877) 264-9522 / Southeast (866) 602-5209
Website: www.mpimetaltreating.com

Information Services #32

Solid Carbide Saws



- ✓ Standard & Special Sizes Available
- ✓ Form Ground and Gang Saws
- ✓ Single or Multiple Saw Holding Applications
- ✓ Quick Change Arbor Capabilities
- ✓ Highly Experienced Design & Manufacturing Staff

Continental Carbide Ltd.

23545 Reynolds Court
Clinton Township, MI 48036

PH - 586.463.9577 FAX - 586.463.9587
EM - mcq1ccl@ameritech.net
www.continental-carbide.com

DISTRIBUTOR INQUIRIES WELCOME

Information Services #23

Surface-enhancement process suitable for microdeburring

Designed as a method for removing hard coatings from cutting tools, the Ion Beam Surface Treatment (IBEST) process, from Quantum Manufacturing Technologies Inc., Albuquerque, N.M., can also microdeburr parts, said Gene Neau, company COO.

The process uses an ion beam to deliver 5 billion watts of energy to a workpiece surface for 150 nanoseconds, which rapidly heats the surface to more than 3,000° F. The surface then cools in about one-millionth of a second.

"It's like a Zamboni ice resurfer," Neau said. "It melts and reflows the workpiece in a millionth of a second."

The melt depth is limited to 5µm per beam exposure, and larger microburrs would need to be exposed to additional bursts, with each exposure removing about 5µm of material, he said. Neau added that the dimensions of the workpiece material do not change, but a sharp corner might be radiused to 2µm.

Another advantage, he added, is that since microcracks accompany burr generation, the IBEST process allows the burr material to flow into the microcracks, improving the surface condition. And the process also reduces the grain size on the part's surface, thereby making the metal more wear-resistant.

Typically, the beam measures 2" to 3" in diameter, so a stainless steel mask would need to be placed over an area that the operator doesn't intend to deburr.

A down side of applying IBEST to deburr internal features, such as cross-holes, is that it's a line-of-sight process. "The ions have to go straight," Neau explained. "They don't turn corners."

—A. Richter

For more information about QM Technologies' IBEST process, call (505) 342-2851, visit www.qminc.com or circle **Information Services #290**.

to another," he said.

In addition, Huette said cycle time was reduced from 5 minutes to less than 2 minutes after switching from manual deburring to the in-line method.

For one application, he said the tool rotates at 2,000 rpm and the helically interpolated feed is 12 ipm.

"The tool is easy to cost-justify," he said. "And it's more consistent than if

humans are involved, which creates a potential for errors."

ThermoBurr's Douglas concurred that manually deburred parts are prone to suffer from human error. "Half of the



PRECISION

"The superabrasive specialists..."

SINGLE CRYSTAL DIAMOND TOOLS	POLYCRYSTALLINE DIAMOND TOOLS
HIGH-PRECISION TURNING TOOLS	ALL GRADES OF PCD & CBN INSERTS
CONTACT LENS & OCULAR TOOLS	GROOVE TOOLS
ALUMINUM WHEELS, PISTONS & OTHER AUTOMOTIVE PARTS	PCD TIPPED TURNING, BORING AND ENDMILL CUTTERS
OVER 150 YEARS DIAMOND TOOLING EXPERIENCE	REGRIND OF EXISTING PCD CBN TOOLS
	EMERGENCY SERVICE AVAILABLE

44 Buck Shoals Road, Arden, NC 28704

800-798-3686, fax: 828-687-3766

www.stfprecision.com

Information Services #37

Diamond Coated End Mills

Diamond – the hardest, most wear-resistant material in the world.

Diamond-coated end mills from **CVD**'s proprietary process are simply the best tools for profiling graphite on the market today.

Highest Quality
Highest Productivity
Lowest Tooling Cost

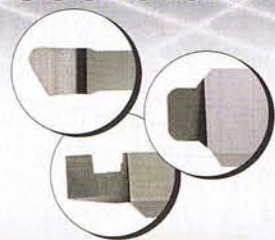


CVD Diamond Corporation
2061 Piper Lane, London, ON Canada N5V 3S5
Phone: (519) 457-9903 1-877-457-9903
Fax: (519) 457-9958 www.cvddiamond.com



Information Services #24

21st Century Quality. Service Like the Good Old Days.



ATP is not your typical machine tool manufacturer.

We listen. We respond. We strive to solve your toughest tooling problems. We pride ourselves on exceeding your delivery expectations. We even *invite* specials!

In other words, we do business like most companies **used** to do business. We believe having a reliable partner is paramount in today's economic environment.

Our unique Micro-Adjustable™ Face Grooving Systems and our special form grooving inserts are examples of our 21st century expertise.



allied tool products, inc.

9334 N. 107th Street • Milwaukee, WI 53224
Toll free (800) 558-5147 • Fax (414) 355-8297
sales@atptools.com • www.atptools.com

Precision
Quality.
Old Fashioned
Personalized
Service.
ATP.

1001-11

Information Services #42

Triple-T Cutting Tools Inc. 1.800.570.6929



Solid Carbide Endmills From Triple-T

Premium Micrograin Carbide
Made in U.S.A.



~~No Distributor
No Reps
No Salesperson~~

• 100% CNC Ground

• **TO YOU!!**

www.triple-t.com fax us your blueprint specials 856.768.3773

Information Services #46

out of touch

manually deburred parts I've seen still have burrs," he said.

Douglas added that after a company automates its deburring operation, not only are there fewer human errors, there are fewer people on the payroll as well. In one instance, the number of manual deburrers at one shop dropped from 27 to 4, he said. △

The following companies contributed to this article:

Robert Bosch Corp.

(843) 760-7000

www.boschusa.com

Information Services #281

Cation

(248) 689-0658

www.cation.com

Information Services #282

Extrude Hone Corp.

(724) 863-5900

www.extrudehone.com

Information Services #283

J.W. Done Co.

(888) 535-3663

www.jwdone.com

Information Services #284

Morton Welding Co. Inc.

(309) 263-2590

www.mortonwelding.com

Information Services #285

Sugino Corp.

(847) 397-9401

www.suginocorp.com

Information Services #286

Surface Technology Inc.

(609) 259-0099

www.surfacetechology.com

Information Services #287

SurfTran Mfg. Co. LLC

(248) 547-3133

www.surftran.com

Information Services #288

ThermoBurr Illinois

(847) 669-5355

Information Services #289